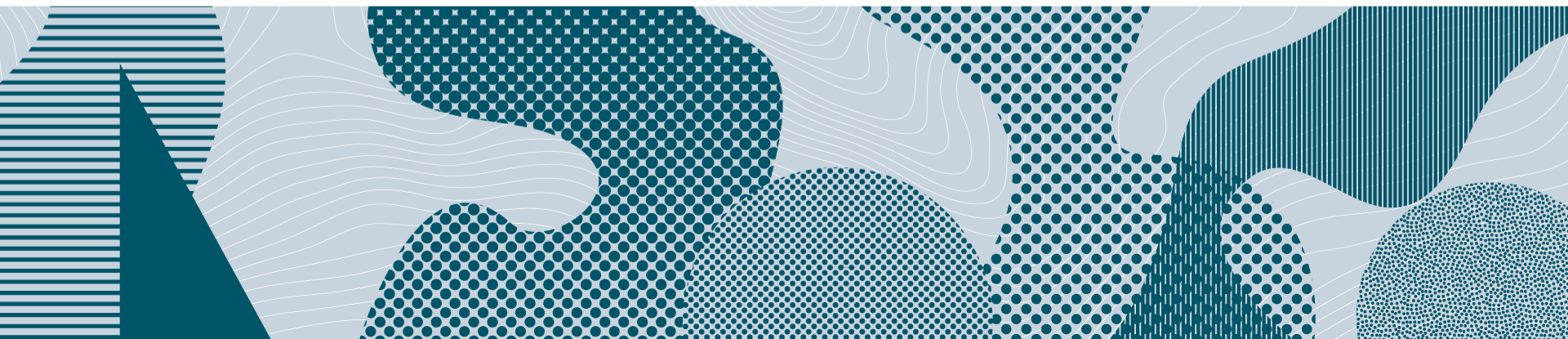


POLISH NATIONAL AGENCY
FOR ACADEMIC EXCHANGE

NAWA for scientists

10 April 2024, PAS Paris



NAWA mission

Enhancing the potential of Polish science and higher education through international exchange and cooperation



Reinforcing
the scientific excellence

Internationalizing
higher education and science

Promoting the Polish language
and culture

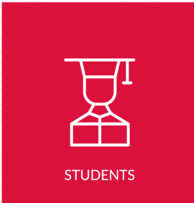
Promoting studies and research
opportunities in Poland



SCIENTISTS



INSTITUTIONS



STUDENTS



POLISH LANGUAGE



SOLIDARITY WITH BELARUS



RESEARCH IN POLAND



SOLIDARITY WITH UKRAINE



NAWA BENEFICIARIES

11 353



INDIVIDUALS

10 594

INSTITUTIONS

761



BUDGET IN 2023

APPROX.
54 000 000 EUR



NUMBER OF NAWA EXPERTS REGISTERED IN THE DATABASE

3 243

Joint research projects („PHC Polonium”)

- Call for applications launched every spring as a result of cooperation between Ambassade de France en Pologne - Service de Coopération et d'Action Culturelle, Ministère de l'Europe et des Affaires Étrangères, Ministère de l'Enseignement supérieur, de la Recherche et de l'Innovation (France) and NAWA
- French partners apply to Campus France, Polish partners apply to NAWA
- Results announced at the end of the year
- Financing from NAWA for travel and costs of stay: max. PLN 30 000 (~ 7 000 EUR) for Polish partners

Joint research projects („PHC Polonium”) – statistics

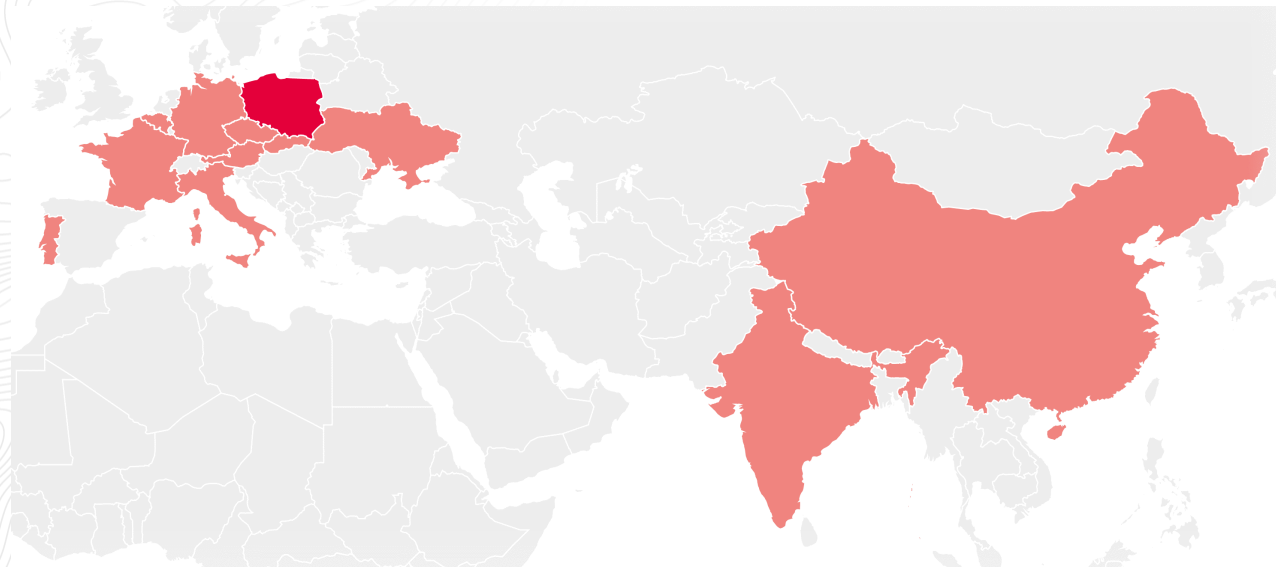
- 20 projects selected for funding in the calls announced annually since 2018
- The presented research project can be related to all fields of science.

Priority for funding will be given to projects whose subject matter correspond to the priorities of the Strategic Partnership between the French Republic and the Republic of Poland and the European Union Horizon Europe framework program.

- Distribution per academic field:

Life sciences	68
Engineering and technical sciences	28
Health sciences	10
Agricultural sciences	5
Social sciences	6
Humanities	5

COUNTRIES OF ORIGIN OF THE PARTNER INSTITUTIONS



444 projects
since 2018

122 projects
in cooperation
with French partners

**Next call: 7 May –
17 July 2024**

Projects start in
January 2025

Success rate
(2018-2023): 41%

wpb@nawa.gov.pl,
(+48) 22 390 35 96



BEKKER NAWA
PROGRAMME

Bekker NAWA Programme



NAWA

- The programme is open to doctoral students and scientists representing all fields of science;
- The host units may be research or academic centers around the world;
- Visits from 3 to 24 months in recognized research centers, allowing to establish long-term cooperation and implementing projects together with scientists from abroad;
- Fellowship Holder with disability may receive additional funds;
- **Deadline for applications: 31st May 2024!**
- Contact: bekker@nawa.gov.pl,
(+48) 451 058 646 or (+48) 451 058 634

With Bekker NAWA to France

- 37 Polish scientists have implemented their projects in French scientific units and universities since 2018 (incl. 8 only in 2023)
- Three most frequently chosen host institutions:
Centre National de la Recherche Scientifique,
École Nationale Supérieure de Chimie de Paris,
Sorbonne University.



Mieczysław Bekker
(1905-1989)

- Polish engineer and scientist
- Founder of the new scientific specialisation of terramechanics
- Constructed Lunar Roving Vehicle used during the Apollo lunar flights
- 1956 emigrated to the USA
- professor at the University of Michigan in Ann Arbor,
- director of the Research Institute of the GM automobile company
- He taught at American technical universities, incl. MIT
- his name was placed in the Space Walk of Fame

Walczak NAWA Programme

The aim: strengthen the potential of Polish scientific units and healthcare entities by supporting the international mobility (1-6 months) of PhD students, scientists and academic teachers with respect to medical sciences, pharmaceutical sciences and health sciences.

The Programme is implemented by the Agency on behalf of the Ministry of Health.

Eligible applicant:

- people with Polish citizenship, foreigners who have a Pole's card or a permanent residence card in Poland representing the field of medical sciences, pharmaceutical sciences or health sciences:
 - doctoral students studying at doctoral schools in Poland
 - persons with at least a doctoral degree, whose place of employment is a healthcare entity in Poland
 - academic teachers with at least a doctoral degree.
- must demonstrate publications in English, published or accepted for publication in journals indexed in the Journal Citation Reports database (with the Impact Factor).
- cannot be employed or carry out a postdoctoral internship at the host institution at the time of submitting the application.

Walczak NAWA Programme

- Host units - centers around the world that conduct research, teaching or scientific activities related to the provision of health services.
- Project tracks: reasearch/didactic/clinical
- So far, within 4 calls, 54 Polish doctors learnt in the USA about good research practices, new therapies and procedures.
- From 2023 the Programme is open to the entire world- 9 candidates applied for scholarship to France.
- **Next call for applications: October 2024–January 2025**
- Contact: walczak@nawa.gov.pl
(+48) 22 390 36 70 or (+48) 518 034 605



<https://nazdrowie.pl/>



WALCZAK
NAWA

Franciszek Walczak
(1940-2015)

- headed the Cardiac Rhythm Disorders Clinic at the Institute of Cardiology
- performed the first RF ablation in Poland
- doyen of Polish electrophysiology
- author and co-author of over 200 publications in Poland and abroad

Ulam NAWA – incoming mobility



<https://commons.wikimedia.org/>



THE **ULAM NAWA**
PROGRAMME

- **Eligible applicant:** at least a doctoral degree, 3 scientific achievements in recent years, representing any field of science, a citizen of any country
- **Project duration:** scientific visits from 6 to 24 months
- **Host:** all universities, scientific institutes of the Polish Academy of Sciences and research institutes. The scientists apply individually after arranging their visits with the host institutions.

Stanisław Marcin Ulam
(1909 -1984)

- Polish mathematician
- member of the internationally renowned Lviv School of Mathematics
- co-author of the Scottish Book
- Before WWII he went to the USA to join the Institute for Advanced Study in Princeton
- associate professor i.a. at the University of Wisconsin, University of Colorado Boulder, Florida State University

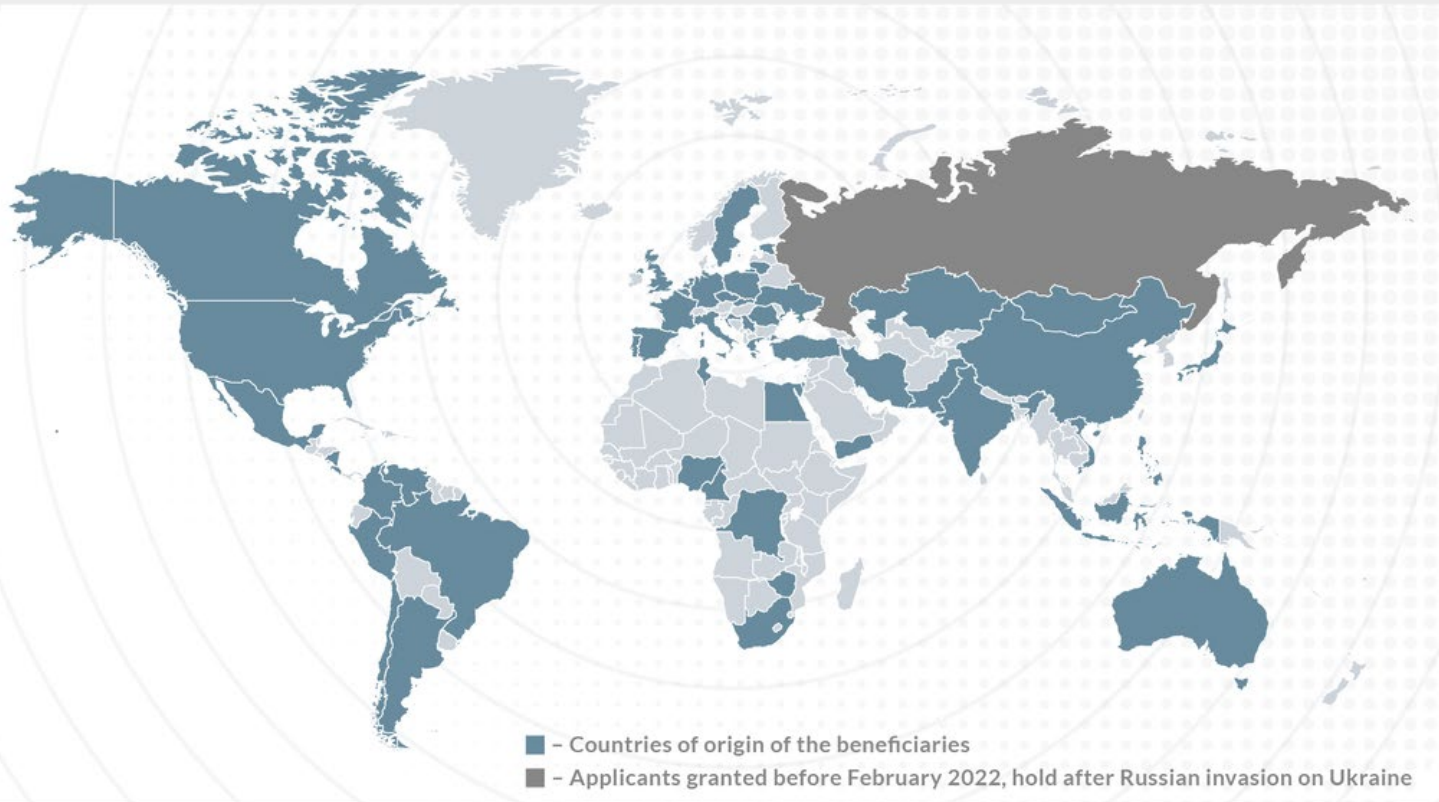


Ulam NAWA - financing

- Scholarship and a living allowance: PLN 11 500 (~ 2 680 EUR) per month
- Allowance for travel depending on the country: PLN 2 000 (~ 470 EUR) from France
- Monthly support for accompanying children: PLN 2 000 (~ 470 EUR)
- Monthly support if a Fellow has a certificate of severe or moderate disability:
PLN 2 000 (~ 470 EUR)

A scholarship, not an employment. Money for research not included.

COUNTRIES OF ORIGIN OF THE BENEFICIARIES



303 fellows
since 2019

6 Fellows from
France

Promotional film

Deadline for
applications:
15 May 2024

Fellowships
starting from
Feb 2025

Success rate:
20-25%

ulam@nawa.gov.pl,
(+48) 22 390 35 27

Thank you!

<https://nawa.gov.pl/en/>

<https://researchinpoland.org/>

<https://study.gov.pl/>



POLISH NATIONAL AGENCY
FOR ACADEMIC EXCHANGE



READY, STUDY
Go! **POLAND**